



Serving Kansans with disabilities

Message from the Executive Director

By Chad A. Wilkins

The winds of change have been “gale force” in Kansas this year. Funding woes have all programs that receive state or federal funds scrambling to meet budgets and avoid cutting services that Kansans need. RCIL has had to face the funding difficulties as well. The Governor handed down a substantial 10% cut to the Home and Community Based Services Physical Disability Medicaid waiver program and entrance into the program is frozen except in certain crisis situations. The funding that Centers for Independent Living use to provide Core Services is also hanging in the balance. Please continue to talk to your Senators, Representatives, and anyone who will listen about the importance of funding Medicaid waiver programs and Centers for Independent Living.

Now for some good news ~

RCIL, along with other Centers for Independent Living in Kansas, was allowed to apply for federal stimulus money. We are proud to report that the money we have been approved to receive will go to enhance our Information & Referral services and will supplement consumer advocacy. During 2009, 2,297 people requested and received Information & Referral services from RCIL. It is the most requested core service we provide. As waiting lists for other services grow, we expect that the number of individuals seeking alternative services will result in an increase in the number of requests for Information & Referral services. Our Information & Referral Team is receiving specialized training so that they know where to find resources that people with disabilities would benefit from. The Information & Referral Team also follows up with people that have requested information to make sure the information that was provided was useful and to offer additional support with any issues that may have arrived in the interim.

Also, RCIL has recently launched RC @ Home, Care & Companion Services, to help fill the gaps created by cuts in other programs or who don't qualify to receive state funded community based in-home services. RC @ Home is a private-pay program for people with disabilities that offers the flexibility and control of self-directed care without the hassle of managing payroll, workers' comp and unemployment when employing Personal Care Attendants. For more information call the Information & Referral Specialist at (800) 580-7245.

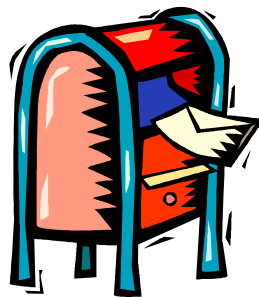


NEW LOCATION IN ARKANSAS CITY - RCIL's Arkansas City office has relocated to 115 S. Summit. There will be a ribbon cutting ceremony on June 3, 2010 at 10:00 am.



RCIL Office Hour Changes

Office hours have changed for office locations in Burlington, Ark City, Fort Scott, and Ottawa. Those offices will be open on Tuesdays and Thursdays 8:00 am to 4:00 pm and Mondays, Wednesdays, and Fridays by appointment and availability.



Notice to Consumers Receiving HCBS

RCIL has recently revised their Personal Care Attendant (PCA) timesheets. The timesheets are now specific to the waiver or program from where the consumer receives services. There have also been changes made to the codes that describe the services that were provided.

Another change put into effect is that timesheets are sent to the consumer's address instead of the PCA's. This ensures that the consumer has access to the timesheet and is able to view it when he/she wishes.

Timesheets can be emailed to consumers or they may pick them up from any RCIL office location. Since the timesheets have been revised, RCIL will only accept the old timesheets until September 1, 2010.

Consumers need to contact their TCM with any address or telephone number changes to ensure their timesheets are mailed to the correct address. If you have any questions regarding PCA timesheets, please call the Payroll Helpdesk at (877) 929-7655.

Advocacy Pays Off

After many years of advocating at the Emporia US Post Office, they now have automatic doors that make the building more accessible.

For over 15 years, RCIL's Emporia office has been located on the second floor of the US Post Office and we have been advocating ever since for automatic doors. The Emporia RCIL Friends group and RCIL staff wrote letters to the Postmaster and even met in-person about the concerns regarding the doors. Patty Gilligan, Human Relations Coordinator for the City of Emporia, and the Accessibility Advisory Committee got the community involved. Gilligan and RCIL Friends wrote letters to Senator Sam Brownback and Congressman Jerry Moran to encourage them to advocate for accessible doors at the US Post Office. Brownback and Moran contacted the United State Postal Services.

In March 2010, the automatic doors were installed. The advocacy efforts truly paid off!



Emporia's RCIL Friends group along with ILS, Toni Martin gathered in front of the Emporia US Post Office's accessible doors.

BARP Accepting Applications

After some time away fundraising and building community partnerships the RCIL Build a Ramp Program (BARP) is back!

The BARP was created to increase independence by building accessible ramps at the homes of individuals with disabilities. These ramps provide the consumers with better access to their homes and the opportunity for greater participation in their communities.

How do you apply? To start the application process, obtain two (2) bids from contractors (with ramp dimensions) and then contact the RCIL Osage City office to request a BARP application.

Applications that have been completed will be considered on a first come, first served basis. The first round of applications will be reviewed on or after **June 15, 2010**. Applicants that have secured volunteer labor, donated materials, and/or additional funding sources **will be given preferential consideration!** Projects will be awarded while funds remain available.

Some BARP basic eligibility criteria:

- Total household income less than 80% of the area median income for your county, according to the U.S. Dept. of Housing and Urban Development.
- A disability determination, or demonstrated need, verified by a 3rd party (Your physician or RCIL Targeted Case Manager).
- Reside in the RCIL core service area (or are a current consumer).
- Have not previously received BARP assistance.
- Applicant must not currently have an accessible entrance.

How can you help? Our goal is to build as many ramps as possible with the limited resources we have available. Therefore, we are seeking volunteer labor and donated materials to help us create or maintain independence for as many individuals as possible.

Contact Adam in the Osage City office, if you would like to participate in any way or would like more information, at (800) 580-7245.

Introducing RC @ Home

RC @ Home is an individualized, private-pay program for people with disabilities that offers the flexibility and control of self-directed care without managing the payroll, workers compensation, and unemployment insurance aspect.

RCIL will provide information to assist in developing and coordinating a plan for services including hiring a Personal Care Attendant.

A Personal Care Attendant might assist with personal care, companion services or homemaker activities such as dressing, bathing, meal assistance, cleaning, shopping, transportation and more.

RC @ Home is an excellent option for people with disabilities who don't qualify or are waiting to receive state funded community based in-home services. If you have questions or would like more information, call (800) 580-7245.



ADA 20th Year Anniversary

The Americans with Disabilities Act (ADA) prohibits discrimination and ensures equal opportunity for people with disabilities in employment, State and local government services, public accommodations, commercial facilities, and transportation.

In celebration of its 20th Anniversary, a campaign has been started, 2010 by 2010. This campaign is trying to collect 2,010 "Proclamations of Recommitment" to the mission of the ADA before its 20th anniversary on July 26, 2010.

Visit <http://www.2010anniversary.org/> for more information.

RCIL Friends Groups

Are you currently receiving services from RCIL or have you in the past? Do you wish you could get the inside scoop of what is going on at the State Capital regarding the budget cuts? Or do you just want to get out and socialize? If your answer is yes to one or all of those questions you should be a member of RCIL Friends.

Friends groups give updates about the budget cuts and share ideas how to talk to their legislators. Other topics are discussed such as transportation, accessibility, budgeting, emergency preparedness, and much more. Afterwards they have some fun by playing bingo or other games of their choice. Refreshments are provided and prizes are given away.

Being a member of RCIL Friends will give you a great opportunity to meet new friends, share ideas and/or personal experiences, gather resources, and learn about new programs and services. All you have to do is show up at your local RCIL Friends meeting and have some fun! You are welcome to bring a friend to these meetings too! If you are interested and want more information, please contact your local office. Location, times and dates can be found on page 5 of this newsletter.

Do your Legislators know you?

Due to the Governor's Medicaid cut put in place in December 2009 the Physical Disability waiver waiting list as of April 28, 2010 is up to 1,975 people and 65 people have died without services. What can you do to help? Write, call or email your legislators to ask them to restore the Medicaid cut and tell them your story of why you want and need Home and Community Based Services. If you do not know who your legislators are, go to www.kslegislature.org or contact your local RCIL office. This website will also give your legislators' address, phone number and email address.

If you would like more information on the waiting list or legislative updates visit www.thekansastruthis.com. Also, you can attend your local Friends meeting to get more information.

You know your Legislators, but do they know you?

Sign up to receive RCIL's consumer newsletter via email and you will be entered into a drawing for a gift card! Contact RCIL at (800) 580-7245 or by email at newsletter@rcilinc.org



You Asked for It



Do I go to SRS office to apply for Medicare?

No, you will need to go to the Social Security Office.

Where do I apply for Medicaid?

Social Rehabilitation Services (SRS) office.

I need help to afford my prescriptions where can I get assistance?

If you have access to a computer that has internet you can go to www.rxassist.org or www.needymeds.org. (Most RCIL offices have a computer with internet access you may use.) These two websites have a list of prescription drug programs that will cover most of the cost or all of the cost for a particular prescription you cannot afford. If you need additional assistance, RCIL has Independent Living Specialists and Peer Specialists that can assist you in this area.

I have a disability and I need help finding a job?

Vocational Rehabilitation (VR) at the Social Rehabilitation Services (SRS) offices assists individuals with disabilities that are looking for employment. RCIL partners with VR, so RCIL can assist you with employment if you prefer.

RCIL Using Wii at Friends Groups

RCIL received a Nintendo Wii from the Research & Training Center on Independent Living which was donated by Kansas Department of Health and Education for our participation in the Living Well With a Disability (LWWD) program last year.

A "Welcome the Wii" event was hosted at the Topeka office on April 20, 2010. LWWD alumni and the Topeka Friends Group were invited to participate in the event. The Wii is now available for use during Friends group meetings & LWWD classes!



8th Annual Fishing Has No Boundaries

The Wheatland Chapter of Fishing Has No Boundaries (FHNB) will be holding the 8th annual fishing festivities at El Dorado Lake September 25th & 26th, 2010. FHNB gives anglers of any age and range of disability the ability to go fishing, use accessible equipment and boats and to enjoy the day! Check out their website at www.fhnbinc.org. For more information, please call our El Dorado office at (800) 960-7853.



RCIL Friends Group Schedule

Current RCIL Friends monthly meetings

- Osage City 2nd Wednesday, 1:00pm at the Osage City RCIL office
- Topeka 3rd Tuesday, 1:00pm at the Topeka RCIL office
- Ft. Scott 3rd Wednesday, 1:00pm at the High Rise Apartments
- Overland Park 3rd Wednesday, 1:00pm at the Overland Park RCIL office
- Ark City 3rd Thursday, 1:30pm at the Windsor Court Apartments
- Iola 4th Tuesday, 1:00pm at the Town House Apartments
- El Dorado 4th Wednesday, 1:00pm at the Heritage House Apartments
- Eureka 4th Tuesday, 1:00pm at the Eureka Public Library
- Emporia Last Tuesday at 2:00pm at the Emporia Public Library

Contact your local office if you want to receive Friends Group invitation via email!

Online Community

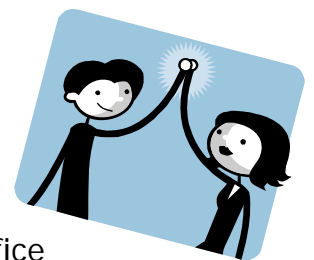
Join RCIL's online community by visiting our website at <http://www.rcilinc.org>. RCIL can also be found on Facebook and Twitter. To find us simply type in RCIL in the search field. We have a Friends Group Facebook page also. Our website, Facebook pages and our Twitter profile have updated information about current and future happenings, legislative happenings as well as our location and general information. Come join the fun!



Sign up for Net Pals

Net Pals is a group that receives emails about events, resources and advocacy updates. If you are interested in joining you can find RCIL Net Pals on the Get Involved page of the RCIL website www.rcilinc.org. You can also call (800) 580-7245 and say you would like to sign up for Net Pals.

If you sign up for Net Pals you will be entered into a drawing for a gift card!





PO Box 257
Osage City, KS 66523

Non-Profit
Organization
US Postage Paid
Osage City, KS
66523
Permit #93

**Resource Center for
Independent Living**

1137 Laing
Osage City, KS 66523

Phone:

(785) 528-3105

(800) 580-7245

TDD (785) 528-3106

Fax:

(785) 528-3665

Satellite Office Locations:

Arkansas City - New location
115 S. Summit
620-442-0775

El Dorado
615 ½ N. Main
316-322-7853

Fort Scott
710 W. 8th
620-223-5670

Ottawa
233 W. 23rd St
785-242-1805

Topeka
519 SW 37th Street
785-267-1717

Burlington
410 Cumberland
620-364-2263

Emporia
625 Merchant, Suite 238
620-342-1648

Iola
726 W. Patterson
620-365-8144

Overland Park
10200 W. 75th, Suite 100
913-362-6618

We're on the Web!

Visit us at:

www.rcilinc.org
